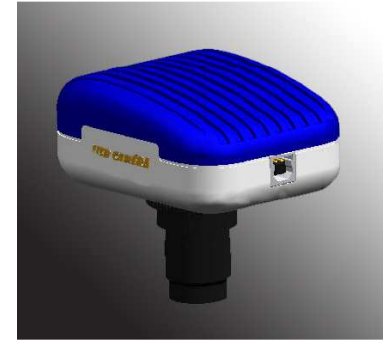


DIGITAL CAMERA MODEL S-VIEW

Measurement functions :

- Measurement calibration & Setting
- Dynamic real-time measurement (straight line, angle, circle, Three-point Circle, rectangle, polygon, counting)
- Static image measurement (feature same as above)



System Requirements :

- CPU : 1GB Up
- RAM : 1 GB Up
- VGA : 16bit or above
- OS : Windows XP / Windows Vista / Windows 7
- Power : USB Bus-Power
- Interface : USB 2.0
- CD-Rom Drive

Package Contents :

- S-View Digital Camera
- USB2.0 cable
- CD Driver & Software

MODEL	3M	5M	9M
TYPE	1/2" CMOS Color sensor	1/2.5" CMOS Color sensor	1/2.3" CMOS Color sensor
PIXELS	3 Mega pixels	5 Mega pixels	9 Mega pixels
VIDEO CAPTURE RESOLUTION	2048x1536 : 11fps	2592x1944 : 6fps	3488x2616 : 2fps, 1600x1200 : 6fps
VIDEO CAPTURE RESOLUTION	1024x768 : 15fps		1280x960 : 20fps, 800x600 : 30fps
VIDEO CAPTURE RESOLUTION	640x480 : 30fps		
VIDEO SETTING	AUTO, MANUAL		
DIMENSION	86mm x 68mm x 48mm		

Application Scope :

- Biological anatomy observation
- Industrial inspection and quality control
- Dermatology (skin/scalp) exam
- Printing and textile inspection
- School teaching and research tool
- Medical analysis tool
- Student trial tool
- Machine vision

